

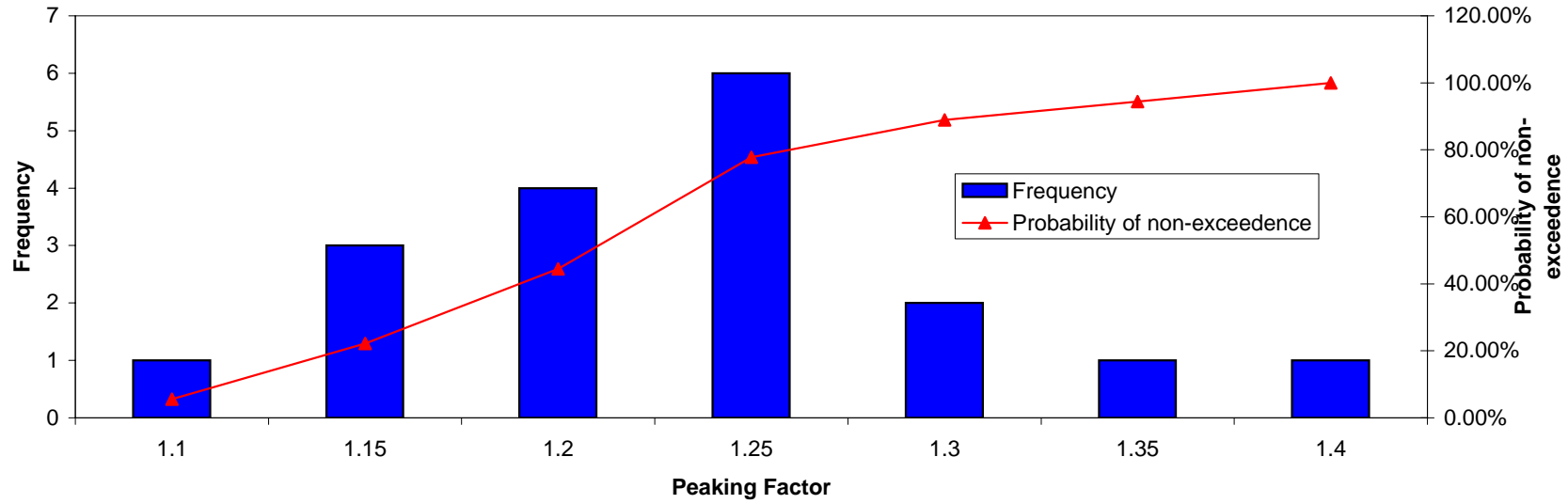
Historical Distribution Input

Year	Average				Peak			
	HH	NHH	Leakage	Total	HH	NHH	Leakage	Total
1963/64	45.1	55	55	155.1	72.3	66.0	55	193.3
1964/65	39.11	60	56	155.1	56.4	72.0	56	184.4
1965/66	41.34	65	57	163.3	46.3	71.5	57	174.8
1966/67	41.66	65	58	164.7	52.9	78.0	58	188.9
1967/68	39.3	67.9	59	166.2	65.8	81.5	59	206.3
1968/69	48.02	71.4	60	179.4	57.8	85.7	60	203.5
1969/70	54.49	71.4	61	186.9	78.2	85.7	61	224.9
1970/71	61.38	73.2	62	196.6	88.2	87.8	62	238
1971/72	64.01	80.4	63	207.4	77.8	96.5	63	237.24
1972/73	63.93	78	64	205.9	77.2	93.6	64	234.79
1973/74	66.68	77.5	65	209.2	81.0	93.0	65	239.02
1974/75	67.39	73.9	65	206.3	76.6	88.7	65	230.27
1975/76	67.58	72.4	65	205.0	96.0	86.9	65	247.84
1976/77	57.54	65.6	65	188.1	83.1	78.7	65	226.77
1977/78	64.07	64.1	65	193.2	87.6	76.9	65	229.49
1978/79	74.49	71.2	65	210.7	94.5	85.4	65	244.97
1979/80	79.76	71.3	65	216.1	110.2	85.6	65	260.8
1980/81	84.34	69.5	65	218.8	117.0	83.4	65	265.35
1981/82	83.43	68.5	65	216.9	102.3	82.2	65	249.53
1982/83	87.14	68.2	65	220.3	113.5	81.8	65	260.35
1983/84	90.16	66.2	65	221.4	132.4	79.4	65	276.83
1984/85	87.17	65.5	65	217.7	134.6	78.6	65	278.16
1985/86	86.75	63.3	65	215.1	114.4	76.0	65	255.36
1986/87	87.71	67.3	65	220.0	123.1	80.8	65	268.85
1987/88	85.06	65.9	65	216.0	114.5	79.1	65	258.6
1988/89	83.92	64.9	65	213.8	124.6	77.9	65	267.48
1989/90	87.86	67	61.4	216.3	121.9	80.4	61.4	263.7
1990/91	105.91	58.7	49	213.6	155.7	70.4	49	275.14
1991/92	104.41	56.1	42.3	202.8	129.8	67.3	42.3	239.4
1992/93	102.91	51.3	37.6	191.8	131.4	61.6	37.6	230.6
1993/94	96.48	48.2	37.1	181.8	133.5	57.8	37.1	228.4
1994/95	91.63	51.4	36	179.0	145.4	61.7	36	243.1
1995/96	104.6	48.5	34.6	187.7	168.6	58.2	34.6	261.4
1996/97	101.6	46.8	34.8	183.2	132.7	56.2	34.8	223.7
1997/98	100.6	44.7	32	177.3	116.1	53.6	32	201.7
1998/99	100.2	42.2	30.7	173.1	129.6	50.6	30.7	210.9
1999/00	108.05	42.7	30.25	181	151.8	51.2	30.25	233.3
2000/01	105.38	41	30.02	176.4	124.2	49.2	30.02	203.4
2001/02	111	42.8	29.8	183.6	149.1	51.4	29.8	230.3
2002/03	110.63	40.7	29.67	181	133.3	48.8	29.67	211.8
2003/04	115.1	42	29	186.1	160.2	50.4	29	239.6
2004/05	110.94	40.8	28.7	180.44	150.1	49.0	28.7	227.8
2005/06	111.75	39.2	29.54	180.49	142.7	47.0	29.54	219.25

Rebased Data

Original Peaking Factor	Year	Rebased Average	Rebased Peak	Rebased Peaking Factor
1.25	1988/89	153.1	201.7	1.32
1.22	1989/90	157.1	199.0	1.27
1.29	1990/91	175.1	232.8	1.33
1.18	1991/92	173.6	206.9	1.19
1.20	1992/93	172.1	208.5	1.21
1.26	1993/94	165.7	210.6	1.27
1.36	1994/95	160.8	222.5	1.38
1.39	1995/96	173.8	245.7	1.41
1.22	1996/97	170.8	209.8	1.23
1.14	1997/98	169.8	193.2	1.14
1.22	1998/99	169.4	206.7	1.22
1.29	1999/00	177.3	228.9	1.29
1.15	2000/01	174.6	201.3	1.15
1.25	2001/02	180.2	226.2	1.26
1.17	2002/03	179.8	210.4	1.17
1.29	2003/04	184.3	237.3	1.29
1.26	2004/05	180.1	227.2	1.26
1.21	2005/06	181.0	219.8	1.21

Probability of Non Exceedence



Portsmouth Water

