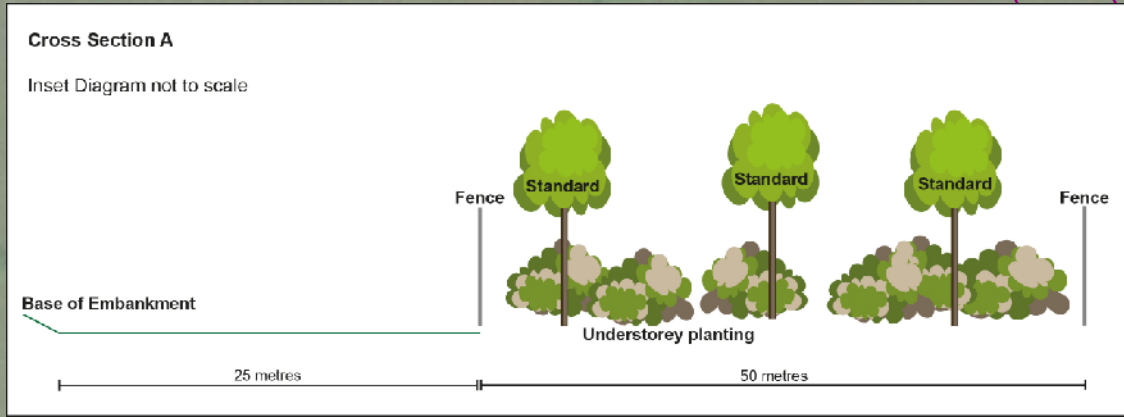
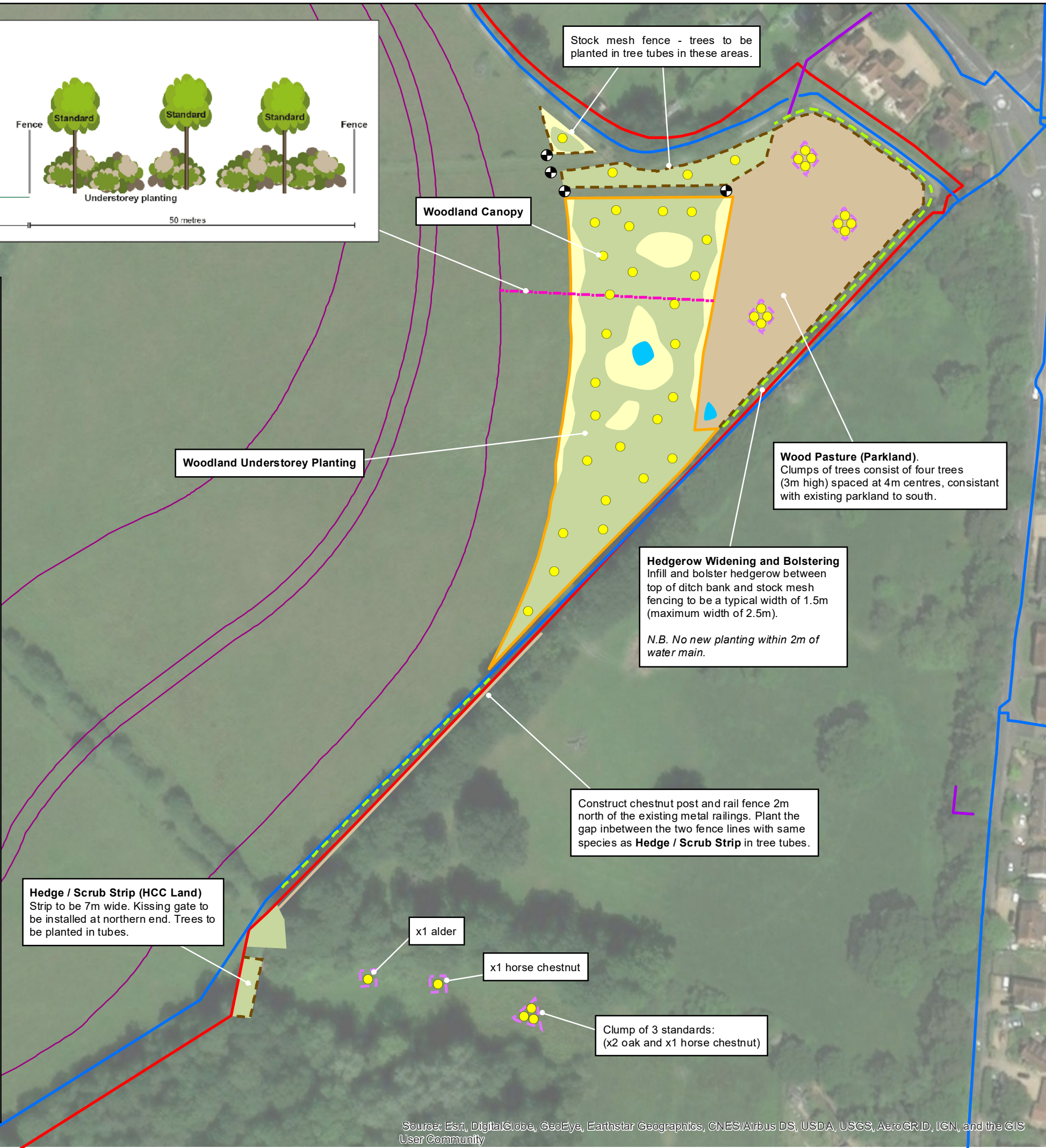


# HAVANT THICKET RESERVOIR, ROWLAND'S CASTLE, HAMPSHIRE

Map 1 - Phase 1 Wood Pasture and Broadleaved Woodland Creation



- SPECIES COMPOSITION**
- Wood Pasture (Parkland)**  
Total 12 Standards at 3 metres in height, planted as three clumps of four trees:  
Pedunculate Oak (8)  
Common Lime (2)  
Sweet Chestnut (2)  
Note: Species mix reflects existing Regency period parkland planting.
- Woodland Canopy**  
Total 30 Standards at 3 metres in height:  
Pedunculate Oak (9)  
Hornbeam (3)  
Sweet Chestnut (6)  
Common Lime (4)  
Field Maple (5)  
Downy / Silver Birch (3)
- Woodland Understorey Planting**  
Trees to be spaced in accordance with guidance provided by the Forestry Commission:  
Pedunculate Oak (3%)  
Field Maple (20%)  
Hazel (33%)  
Hawthorn (7%)  
Guelder Rose (6%)  
Holly (5%)  
Wild Privet (2%)  
Dog Rose (3%)  
Downy Birch (8%)  
Alder (2% in wet areas)  
Grey / Goat Willow (3% in wet areas)  
Wild Cherry (4% on edges)  
Rowan (3% on edges)  
Honeysuckle (Planted throughout x50 specimens)
- Hedgerow Bolstering**  
Field Maple (5%)  
Hazel (30%)  
Hawthorn (40%)  
Guelder Rose (3%)  
Holly (5%)  
Wild Privet (2%)  
Dog Rose (3%)  
Downy Birch (2%)  
Alder (2% in wet areas)  
Grey / Goat Willow (2% in wet areas)  
Wild Cherry (2%)  
Crab Apple (2%)  
Rowan (2%)
- Hedge / Scrub Strip (HCC Land)**  
7m wide. To be planted with mix of:  
Hawthorn  
Hazel  
Crab Apple  
Wild Cherry  
Blackthorn  
Alder (in wetter area)



- KEY**
- Site Boundary
  - Water Main
  - Private Water Main
  - Reservoir Embankment
  - Cross Section A (see inset diagram)
  - Wood Pasture
  - Understorey Planting
  - Area of Natural Regeneration (to form a more natural, graded edge / mosaic)
  - Pond (ephemeral)
  - Hedgerow Bolstering
  - Stock Mesh Fencing (trees to be planted in tree tubes)
  - Chestnut Post and Rail Fence
  - Deer Fencing
  - Protection Fencing (to be consistent with HCC lottery funded planting)
  - Location of Standard (3 metres in height)
  - ⊗ Gate (to allow passage of livestock)

Scale at A3: 1:1,500

0 5 10 20 30 40  
Metres

**ECOSA**  
Ecological Survey & Assessment

ECOSA Ltd., Ten Hogs House, Manor Farm Offices,  
Flexford Road, North Baddesley, Hampshire SO52 9DF  
Telephone: 02380 261065 Email: [info@ecosa.co.uk](mailto:info@ecosa.co.uk)  
Web: [www.ecosa.co.uk](http://www.ecosa.co.uk)

Source: Esri, DigitalGlobe, GeoEye, Earthstar Geographics, CNES/Airbus DS, USDA, USGS, AeroGRID, IGN, and the GIS User Community

© This map is the copyright of Ecological Survey & Assessment Ltd. Any unauthorised reproduction or usage by any person/s other than Ecological Survey & Assessment Ltd. or Portsmouth Water is prohibited.