

# Public Record - Water Quality Summary

01/01/2024 to 31/12/2024



## Worlds End Supply Zone

Parameter (Units)	Ann. Sampling Frequency		Comment	PCV	Samples Contravening PCV		Concentration or Value (all samples)		
	Required	Taken			No.	%	Min	Mean	Max
Colony Count 72h at 22C(No/ml)	36	38		N/A	0	0.00	0	0.2	3
Colony Count 48h at 37C(No/ml)	0	38		N/A	0	0.00	0	0.2	3
Coliform Bacteria (Indicator)(No/100ml)	122	122		0	0	0.00	0	0	0
E-Coli (Faecal Coliforms - Confirmed)(No/100ml)	122	122		0	0	0.00	0	0	0
Clostridium Perfringens (Confirmed)(No/100ml)	8	8		0	0	0.00	0	0	0
Enterococci (Confirmed)(No/100ml)	8	8		0	0	0.00	0	0	0
Residual Disinfectant - Total(mg/l)	122	123		N/A	0	0.00	0.21	0.38	0.67
Residual Disinfectant - Free(mg/l)	122	123		N/A	0	0.00	0.11	0.33	0.55
Nitrate(mg/l NO3)	8	8		50	0	0.00	21.7	23.4	25.3
Ammonium (Total)(mg/l NH4)	8	7		0.5	0	0.00	<0.073	<0.073	<0.073
Bromate(ug/l BrO3)	8	9		10	0	0.00	<0.8	0.8	1
Chloride(mg/l Cl)	8	8		250	0	0.00	21.9	22.3	23.1
Colour(mg/l Pt/Co)	36	36		20	0	0.00	<1.93	<1.93	<1.93
Cyanide-Total(ug/l CN)	8	9		50	0	0.00	<4.1	<4.1	<4.1
Conductivity(uS/cm @20C)	36	36		2500	0	0.00	499	586.4	597
Fluoride (Total)(mg/l F)	8	9		1.5	0	0.00	0.086	0.375	0.432
Hydrogen Ion (pH) - Indicator(pH Value)	36	36		6.5 - 9.5	0	0.00	7.05	7.22	7.59
Nitrite (Consumers Taps)(mg/l NO2)	8	8		0.5	0	0.00	<0.011	<0.011	<0.011
Nitrate/Nitrite Formula(mg/l)	8	8		1	0	0.00	0.434	0.467	0.506
Sulphate(mg/l SO4)	8	8		250	0	0.00	20.2	20.9	24.9
Odour (Quantitative)(Dil Num)	36	36		0	0	0.00	0	0	0
Taste (Quantitative)(Dil Num)	36	36		0	0	0.00	0	0	0
Turbidity(NTU)	36	36		4	0	0.00	0.024	0.118	0.808
Total Organic Carbon(mg/l C)	8	9		N/A	0	0.00	0.3	0.8	2.2
Aluminium (Total)(ug/l Al)	8	7		200	0	0.00	<8.1	<8.1	<8.1
Antimony(ug/l Sb)	8	8		5	0	0.00	<0.2	0.3	0.3
Arsenic (Total)(ug/l As)	8	8		10	0	0.00	<1	<1	<1
Boron (Total)(mg/l B)	8	8		1	0	0.00	<0.14	<0.14	<0.14
Cadmium (Total)(ug/l Cd)	8	8		5	0	0.00	<0.22	<0.22	<0.22

**Portsmouth Water Ltd**  
**Public Record - Water Quality Summary**  
**01/01/2024 to 31/12/2024**



**Worlds End Supply Zone**

Parameter (Units)	Ann. Sampling Frequency		Comment	PCV	Samples Contravening PCV		Concentration or Value (all samples)		
	Required	Taken			No.	%	Min	Mean	Max
Chromium (Total)(ug/l Cr)	8	8		50	0	0.00	<2.3	<2.3	<2.3
Copper (Total)(mg/l Cu)	8	8		2	0	0.00	<0.172	0.192	0.333
Iron (Total)(ug/l Fe)	8	7		200	0	0.00	<13.8	<13.8	<13.8
Lead (10 ug/l)(ug/l Pb)	8	8		10	0	0.00	<0.5	<0.5	<0.5
Manganese (Total)(ug/l Mn)	8	7		50	0	0.00	<2.5	<2.5	<2.5
Mercury(ug/l Hg)	8	8		1	0	0.00	<0.04	<0.04	<0.04
Nickel(ug/l Ni)	8	8		20	0	0.00	3.4	9	10.8
Selenium(ug/l Se)	8	8		10	0	0.00	<0.8	3.3	4
Sodium (Total)(mg/l Na)	8	8		200	0	0.00	9.8	10.2	10.8
Benzo[a]Pyrene(ug/l)	8	8		0.01	0	0.00	<0.003	<0.003	<0.003
Polycyclic Aromatic Hydrocarbons (4)(ug/l)	8	9		0.1	0	0.00	0	0	0
1,2 Dichloroethane(ug/l)	8	8		3	0	0.00	<0.12	<0.12	<0.12
Tetrachloromethane(ug/l)	8	8		3	0	0.00	<0.11	<0.11	<0.11
Tetra+Trich(ug/l)	8	8		10	0	0.00	0	0	0
Trihalomethanes(ug/l)	8	8		100	0	0.00	4.27	6.2	10.78
2,4 - D(ug/l)	8	9		0.1	0	0.00	<0.007	<0.007	<0.007
Atrazine(ug/l)	8	9		0.1	0	0.00	0.002	0.005	0.006
Bentazone(ug/l)	8	9		0.1	0	0.00	<0.007	<0.007	<0.007
Benzene(ug/l)	8	8		1	0	0.00	<0.02	<0.02	<0.02
Dieldrin(ug/l)	8	8		0.03	0	0.00	<0.007	<0.007	<0.007
Diuron(ug/l)	8	9		0.1	0	0.00	<0.004	0.004	0.005
Fluroxypyr(ug/l)	8	9		0.1	0	0.00	<0.008	<0.008	<0.008
Glyphosate(ug/l)	8	9		0.1	0	0.00	<0.005	<0.005	<0.005
Metazachlor(ug/l)	8	9		0.1	0	0.00	<0.003	0.003	0.003
Pendimethalin(ug/l)	8	9		0.1	0	0.00	<0.007	<0.007	<0.007
MCPA(ug/l)	8	9		0.1	0	0.00	<0.008	<0.008	<0.008
Mecoprop (MCP)(ug/l)	8	9		0.1	0	0.00	<0.005	<0.005	<0.005
Metaldehyde(ug/l)	8	9		0.1	0	0.00	<0.008	<0.008	<0.008
Propazamide(ug/l)	8	8		0.1	0	0.00	<0.005	<0.005	<0.005

PCV = Minimum or Maximum Permitted Value.

Comments: R = Reduced Frequency, U = Undertaking for Improvement

**Portsmouth Water Ltd**  
**Public Record - Water Quality Summary**  
**01/01/2024 to 31/12/2024**

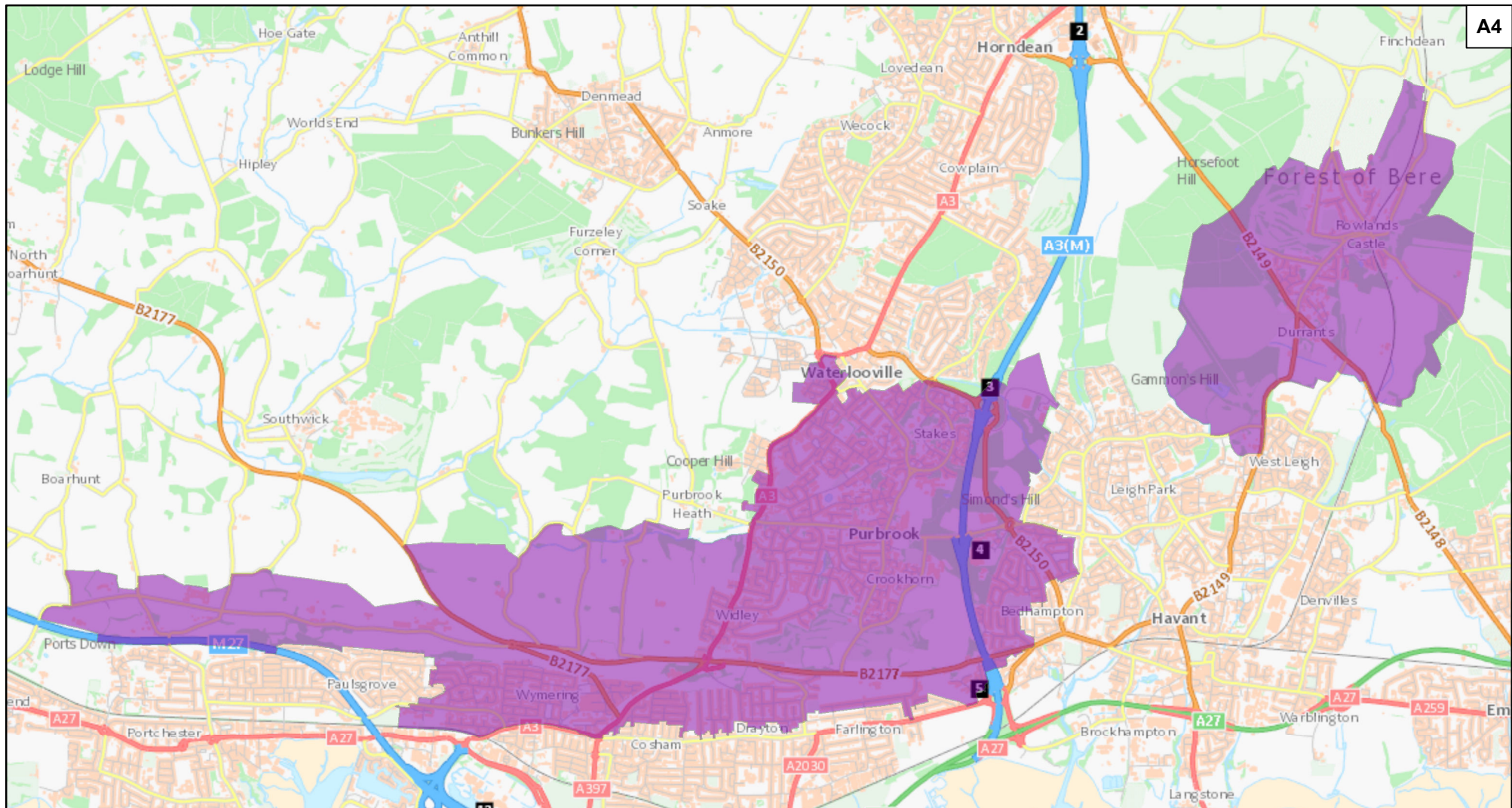


**Worlds End Supply Zone**

Parameter (Units)	Ann. Sampling Frequency		Comment	PCV	Samples Contravening PCV		Concentration or Value (all samples)		
	Required	Taken			No.	%	Min	Mean	Max
Simazine(ug/l)	8	9		0.1	0	0.00	<0.003	0.003	0.004
Triclopyr(ug/l)	8	9		0.1	0	0.00	<0.015	<0.015	<0.015
Total Pesticides(ug/l)	8	9		0.5	0	0.00	0.004	0.006	0.011

**61                      Total No.Tests      1189                      Failures = 0 = 0.000 %                      Pass Rate = 100.00 %**

**Worlds End Zone Population 2024 = 45,346**



© Crown copyright 2025. All rights reserved.  
Ordnance Survey Licence Number 100018036.



Registered Office  
P.O. BOX NO. 8, West Street, Havant,  
Hampshire. PO9 1LG.  
Registered in England No. 2536455  
Telephone: (023) 9249 9888  
Fax: (023) 9245 3632  
Website: [www.portsmouthwater.co.uk](http://www.portsmouthwater.co.uk)

## Water Supply Zones - ZWE1

The information supplied is given in good faith as a guide to locating underground apparatus. Its accuracy cannot be guaranteed, nor does it include comprehensive information about the existence or location of service pipes or cables to individual premises. The responsibility for locating and avoiding damage to apparatus on site shall be that of the person proposing to excavate in the street who shall be liable to the apparatus owner and any third party who may be affected in any way for the loss or damage caused by their failure to do so.

Drg No:

Job No:

OS Ref: SU6708NW

Scale: 1:57,000

Date: 10/04/2025

**PORTSMOUTH WATER LTD**

General Information	ZONE – WORLDS END	2024
<p><b>Comments on Water Quality:</b></p> <p>Based on all the samples taken in 2024, this water meets the chemical and microbiological requirements of the Water Supply (Water Quality) Regulations 2016 (as amended).</p> <p>7 out of the required 8 samples were collected for Ammonium (mg/l NH<sub>4</sub>) in 2024. The shortfall in samples was due to a scheduling error.</p> <p>7 out of the required 8 samples were collected for Aluminium (ug/l Al) in 2024. The shortfall in samples was due to a scheduling error.</p> <p>7 out of the required 8 samples were collected for Iron (ug/l Fe) in 2024. The shortfall in samples was due to a scheduling error.</p> <p>7 out of the required 8 samples were collected for Manganese (ug/l Mn) in 2024. The shortfall in samples was due to a scheduling error.</p>		
<p><b>Action taken to comply with Section 19 undertakings</b></p> <p>Phosphate is dosed in the water to reduce pick-up of lead from lead pipework.</p>		

## Determinands Analysed

<b>METALS</b>		
<b>SUBSTANCE TESTED</b>	<b>WHAT IT MEANS</b>	<b>REGULATORY STANDARD</b>
<b>Antimony</b>	These metals can occur naturally in source water at low levels. Some may also come from plumbing systems and industrial processes. The standards provide wide safety margins on known levels of toxicity.	5.0 µg /l
<b>Cadmium</b>		5.0 µg/l
<b>Chromium</b>		50 µg /l
<b>Nickel</b>		20 µg/l
<b>Mercury</b>		1.0 µg /l
<b>Selenium</b>		10 µg /l
<b>Aluminium</b>	Aluminium occurs naturally and is also used during treatment to remove impurities. Concerns have been expressed about a link between aluminium and Alzheimer's disease, but there is no proven connection, although research on this is ongoing.	200 µg/l
<b>Arsenic</b>	This occurs naturally in water at low levels.	10 µg /l
<b>Boron</b>	Low levels of boron can be found in some waters due to its use in detergents.	1.0 mg/l
<b>Copper</b>	Traces of copper can sometimes be found in water, usually as a result of old, corroding plumbing or new plastic pipes. This can cause a metallic taste.	2.0 mg/l
<b>Lead</b>	Lead is rarely present in water sources but many properties built before the mid-1960's have a lead supply pipe or some lead plumbing. Portsmouth Water adds phosphate to most of the water supplied to reduce the amount of lead dissolved from pipes.	10 µg /l
<b>Iron</b>	Iron can naturally occur in some water sources and is removed during treatment. Iron in the water supplies may also be derived from old iron mains or domestic pipe work. This is not a health hazard, but can cause the water to become discoloured.	200 µg/l
<b>Manganese</b>	This can naturally occur in some water sources and is removed during treatment. Disruption to water mains can stir up sediment, containing manganese.	50 µg/l
<b>Sodium</b>	Sodium is a naturally occurring substance that can increase as an effect of softening the water. If you use a water softener you should retain an un-softened supply for drinking.	200 mg/l



<b>NON-METALS</b>		
<b>SUBSTANCE TESTED</b>	<b>WHAT IT MEANS</b>	<b>REGULATORY STANDARD</b>
<b>Ammonium</b>	Ammonia occurs naturally in many water sources. It is not harmful and is normally removed by treatment.	0.5 mg/l
<b>Bromate</b>	Bromate can potentially form when hypochlorite or ozone are used in water treatment. We control the treatment process tightly to minimize this.	10 µg/l
<b>Chloride</b>	Chloride occurs naturally in water but may give a salty taste to the water and contribute to corrosion.	250 mg/l
<b>Cyanide</b>	Cyanide is rarely found in water. When it is detected it is normally in areas of heavy industry.	50 µg/l
<b>Fluoride</b>	Fluoride occurs naturally at low levels in some of Portsmouth Water's supplies. None of our supplies are artificially fluoridated.	1.5 mg/l
<b>Nitrate</b>	Nitrate arises from the use of fertilizer on agricultural land.	50 mg/l
<b>Nitrite</b>	Nitrite occurs at much lower levels than nitrate and conversion from one form to another occurs readily. The regulations also require that the Nitrate:Nitrite ratio $[\text{nitrate}]/50 + [\text{nitrite}]/3 \leq 1.0$ .	0.5 mg/l at Customers tap 0.1 mg/l at Water Treatment Works
<b>Sulphate</b>	Sulphate occurs naturally in water and comes from mineral deposits.	250 mg/l

<b>BACTERIA</b>		
<b>SUBSTANCE TESTED</b>	<b>WHAT IT MEANS</b>	<b>REGULATORY STANDARD</b>
<b>Faecal Coliforms (E.coli)</b>	These bacteria are specific inhabitants of the digestive systems of warm blooded animals. They are an indication of possible contamination (with other harmful bacteria possibly being present). Any detection in treated waters is investigated as a matter of urgency.	0 per 100ml
<b>Total Coliforms</b>	These are bacteria that provide a general and very sensitive measure of microbiological quality. They are removed by water treatment processes, but where they are detected it is often because they can grow within taps in the home. Any detection in treated waters is investigated as a matter of urgency.	0 per 100ml
<b>Enterococci</b>	As with coliforms, the presence of these organisms can indicate possible contamination in the water supply so they are investigated as a matter of urgency.	0 per 100ml
<b>Colony Count at 37°C</b>	Small numbers of bacteria can be present in treated water. The information obtained from these tests is used to maintain the efficiency of the water treatment processes and the cleanliness of water mains. Any unusually high levels are investigated.	Number per 1ml
<b>Colony Count at 22°C</b>		No abnormal change from a long term average.
<b>Clostridium Perfringens</b>	As with coliforms, the presence of these organisms can indicate contamination in the water supply so they are investigated as a matter of urgency.	0 per 100ml

## ORGANIC CHEMICALS: PESTICIDES

SUBSTANCE TESTED	WHAT IT MEANS	REGULATORY STANDARD
Aldrin	Pesticides consist of chemicals used by farmers, local authorities and gardeners. The traces of these found in untreated water are typically far less than the maximum advised to protect public health.  The pesticides tested for will vary from area to area, depending on the usage of pesticides in the surrounding area of each water source.	0.03 µg/l
Dieldrin		0.03 µg/l
Heptachlor		0.03 µg/l
Heptachlor epoxide		0.03 µg/l
Other individual Pesticides		0.1 µg/l
Total Pesticides	This is the total amount of each individual pesticide detected in the water sample tested.	0.5 µg/l

## ORGANIC CHEMICALS: OTHERS

SUBSTANCE TESTED	WHAT IT MEANS	REGULATORY STANDARD
Benzene	Benzene is rarely found naturally in water but is removed in treatment processes. It arises from petroleum products and industries.	1.0 µg/l
Trichloromethane ^	These compounds are known as Trihalomethanes (THM's). They are formed when chlorine comes into contact with organic compounds in the raw untreated water.	100 µg/l (^For the total amount of these four compounds)
Dichlorobromomethane ^		
Dibromochloromethane ^		
Tribromomethane ^		
Tetrachloromethane	These substances are known as solvents. They arise from industrial processes and are removed from the water during the treatment stage.	3.0 µg/l
1,2 Dichloroethane		3.0 µg/l
Trichloroethene * and Tetrachloroethene *		10 µg/l (*For the total amount of these two compounds)
Benzo-a-pyrene		0.01 µg/l
Benzo-b-fluoranthene *	These compounds are known as Polycyclic aromatic hydrocarbons (PAH's). They are rare substances and are seldom found in water. Where they do occur, the cause is usually the coal tar pitch lining from iron mains.	0.1 µg/l (*For the total amount of these four compounds)
Benzo-k-fluoranthene *		
Benzo-ghi-perylene *		
Indeno-123-cd-pyrene *		





## OTHER PARAMETERS

SUBSTANCE TESTED	WHAT IT MEANS	REGULATORY STANDARD
<b>Colour</b>	Chemical changes in the water source or pressure changes in the distribution main can give the water a tinge of colour.	20 mg/l Pt/Co
<b>Conductivity</b>	This is a measure of the level of natural mineral salts contained in the water. This is measured by passing an electrical current through the water.	2500 $\mu$ S per cm at 20°C
<b>pH (Hydrogen Ion)</b>	This is a measure of the acidity or alkalinity of the water. A pH of 7 is neutral.	Between 6.5 and 9.5 pH units
<b>Taste Dilution Number</b>	This is to check if the water has any unpleasant taste or smell. It is measured using trained panellists to taste and smell the water in strictly controlled conditions.	Acceptable to consumers and no abnormal change
<b>Odour Dilution Number</b>		
<b>Temperature</b>	Temperature is checked to monitor changes in the water system.	No legal limit
<b>Total Chlorine</b>	Sufficient chlorine is added to all our supplies to ensure the absence of harmful bacteria. Portsmouth Water also aims to keep the levels at customer's taps low to minimize associated taste and odour issues.	No legal limit
<b>Free Chlorine</b>		
<b>Total Organic Carbon</b>	TOC is a measure of the organic material present in the water. It varies naturally depending on the source of the water and is monitored for any unusual changes (which could be caused by oil spills or other pollutants).	No abnormal change
<b>Turbidity</b>	This is a measure of suspended material in the water.	4.0 NTU at Customers tap 1.0 NTU at Water Treatment Works